



Uncle Calvin's Coffeehouse

1982-2010 -- OUR 28th YEAR! 214-363-0044

Spring 2010

www.unclecalvins.org



Go to the Kerrville Folk Festival May 27 to Jun 15 and support Uncle Calvin's.

Kerrville-music.com

We're holding a raffle for a ticket good for all 18 days of the festival and the proceeds go towards helping Calvin's make some improvements. You can use the ticket in anyway you please...attend it all yourself, divide it up, give away some days, sell it on ebay...and you also get a fest parking pass, a fest T-shirt and CD and an Uncle Calvin's T-shirt, all for a \$20 entry. But hurry because the drawing will be held at the April 9th show. And, if you are here that night, we'll also refund the cost of your ticket for the show! Only 50 tickets will be sold. Available only at Uncle Calvin's, not on line.

Apr 09 THE WAYMORES

Kerrville Folk Festivals on the road will tonight here present The Waymores: Tom Kimmel, Sally Barris, and Don Henry.

From the romantic to the melancholy to the humorous, a spiritual light illuminates Tom's poignant songs and poetry. A nimble guitarist with a warm, engaging presence, Tom's melodies will last you a lifetime.

Dozens of stars have recorded his songs, including Linda Ronstadt, Johnny Cash, Nanci Griffith, Randy Travis and Dolly Parton, and his works are also featured in numerous movies and TV shows. tomkimmel.com



Whether in her own voice or those of hit makers Martina McBride, Lee Ann Womack, Keith Urban or Trisha Yearwood, Sally's progressive folk-country songs keep her Celtic and folk roots intact. Her light and expressive soprano is captivating while her songs of love and life come alive in intriguing melodies with an off-center viewpoint. sallybarris.com

Don's songs are recorded by Ray Charles, Kathy Mattea, Conway Twitty and dozens of others, but they shine the brightest when performed by their Grammy winning author. Long appreciated as one of the finest writers of folk-country-pop, Don is revered by his peers as being inspirational, entertaining and funny. Poignancy often takes its place alongside a quirky wit and inventive melody in Don's songs. donhenry.com

waymores.net

Apr 16 (\$15/\$18) Robin & Linda Williams

Robin & Linda are Prairie Home Companion's faves; ours as well. Tonight they bring us *Buena Vista*, their newest of 20 albums of sweet folk and gospel tinged bluegrass & old timey country music. Joined by Their Fine Group, Robin & Linda's vocal harmonies flow with a vibrant feel-good energy and there's instrumental magic in the guitar, banjo, dobro and mandolin playing. Down home humor and jokes plump the program for an evening of sure-to-sell-out top notch entertainment. Better order tickets now!

robinandlinda.com
Special Guest: John Wort Hannam

In the 8 years since he became a working musician, John released 4 albums and captured 5 Grand prize/First place awards for his songwriting. The day after this show he'll return to Canada to attend (and hopefully accept) the Juno Awards for Best Traditional/Roots album. While teaching language arts to Kainai/Blackfoot children, John developed a narrative story-telling style which he joins with a great voice and guitar playing johnworthannam.com



Apr 23 TIM GRIMM

Awarded crowns for "Year's Best of" Folk and Americana albums, Songwriting, and Vocalist brings deserved national recognition to Tim as Americana's finest songwriter. Family roots are thematic in his optimistic and evocative story songs of remembrance and in his achingly beautiful songs of romance written with a gentle hand. Woody Guthrie's spirit is evident in Tim's no-nonsense edgy songs of social/political commentary, while witty observations of daily life are recalled in his porch swing ruminations. Tonight we'll premiere Tim's latest CD, *Farm Songs*. timgrimm.com



Opening: Efron White
Winning Ozarks flavored tunes, a down home voice.

Apr 30 DIANA JONES

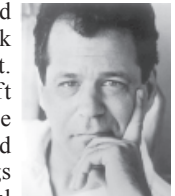
Diana's music is informed by the themes that have run through her life...love, loss, and redemption...bringing to mind both Emily Dickinson & Loretta Lynn in the same breath. From the mournful lament of a dance hall girl, to the stomping melodic rant of a young woman's burial instructions, each of Diana's original songs draws life from the rich cross currents of old timey, country blues and mountain music. Just as authoritative as Ms. Jones's pen, however, is her singing voice, a clarion alto whose rich timbres and elongated phrasing sometimes suggest those of a cello or viola. In Diana's music, you'll hear images of simpler times, in a voice that is as unique as it is timeless. dianajonesmusic.com



Special Guest: Nels Andrews
His rootsy, mellow folk-rock songs are music as landscape, tales that instantly take settle in your mind as though they've been there forever. Nels is a winner of multiple songwriting competitions including Kerrville, Telluride, Mt. Stage and Falcon Ridge. nelsandrews.com

May 07 Cliff Eberhardt

With a lusty voice bold, rich and expressive, Cliff delivers folk-rock songs that are hard edged and direct. Yet compassion and a soft heartedness are revealed in those evocative, lyrically sophisticated and eloquent songs. Those songs are strident declarations and playful tales, songs of love, regret and longing, all wrapped in lush melodies. Cliff's guitar playing can be driving and demanding or sweet and flowing, but it is always enthralling! He'll be featuring songs from his brand new album, *500 Miles: The Blue Rock Sessions*, recorded in Wimberly's Blue Rock Studios by acclaimed producer **Billy Crockett**.



cliffeberhardt.net

Opening: Stephanie Bettman & Luke Halpin
Distinctive vocals & fiddling on bluegrass, country & folk.

May 14 Closed for Wildflower Festival

Featuring: The Flyin' A's, Bill Ward, Zoe Lewis, Slaid Cleaves, Small Potatoes, Buddy Mondlock, Kat Eggleston, Don Conoscenti, Tracy Grammer, Chuck Brodsky, The Laws, Eliza Gilkyson, Terri Hendrix & Lloyd Maines, Jimmy Lafave and more. wildflowerfestival.com

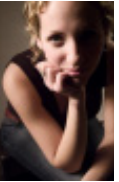
May 28 - Jun 11 Closed for Kerrville Festival

Kerrville-music.com

May 21 Natalia Zukerman / Jason Wilber

Tonight we feature two marvelous performers whose opening acts here were greeted with spontaneous standing ovations and numerous requests to invite them back. Here they are!

A wandering Gypsy troubadour, Natalia inherited her family's music gene: her father's a renowned violinist/conductor, her mother a flutist/writer, and her sister, an opera singer. Honoring that heritage, Natalia is a top notch and mesmerizing guitarist with a darkly sweet and provocative voice. Her contemporary songs are lyrically sophisticated, intimate, and at times, irreverent observations of work, love, temptation and personal reinvention all set to folk and world beats. nataliazukerman.com



Even if you've not had the joyous experience of hearing Jason in a live performance, you've probably heard his lead guitar playing on recordings by John Prine or Lucinda Williams or Trisha Yearwood or Tim Grimm or Carrie Newcomer. He also tours with Prine, Greg Brown, and Hal Ketchum among others. Jason's own brand of folk, mixed with country, jazz and rock, is described as "Van Morrison meets Wilco". An engaging performer, Jason songs are insightful and personal, usually with plenty of humor, sung in a fine tenor voice. jasonwilber.net

Special Guest: Louise Taylor
Louise creates an atmosphere heavy with smoldering sensuousness and intrigue. Her sultry voice layers with rhythmic and bluesy guitar, ethereal piano and seasoned, emotionally mature and poetic lyric which speak of worldly wisdom and the ways of love. Blessed with a quick wit and an easy stage manner, Louise's finely crafted story-songs, in the Appalachian/Irish tradition, verges on cinematic film noir which transports so completely that you'll find yourself part of the story. louisetaylor.com

Jun 18 (\$15/\$18, no youths) Eliza Gilkyson

In a voice lithe and expressive, sensual and soulful, Eliza offers up a marvelous repertoire of modern folk/rock music illuminated by mature lyrics and complex melodies on guitar and piano. Her evocative songs speak of life's beauty, romance, awakenings, loss, redemption and estrangement as well as social and political concerns. Her most recent album, *Beautiful World*, has been called "Gilkyson's masterpiece...stylistically adventurous...a benchmark record for contemporary folk." Simply, she remains one of our finest musical treasures. elizagilkyson.com



Opening: Sweet Talk Radio
Passionate duets on folk/pop song vocals & guitar.

Jun 25 Emily Elbert / Anthony da Costa

Now with two years behind her on full-scholarship at the prestigious Berklee College of Music, our hometown girl from Coppell is quickly growing in the national spotlight. Her lifelong passion for music from around the world, and distinctive combination of jazz, folk, soul, blues, and pop creates a sound that engages the hearts, minds, and ears of listeners around the globe. Emily blends a hip musical perspective with an in-depth knowledge of classic songs to create unique vocal and guitar arrangements. emilyelbert.com



Anthony's music combines folk, rock, Americana and pop, plus what it's like to be a very, very young man with a very, very old soul. In 2007, at only 16, he became the youngest-ever song contest winner at the Kerrville and Falcon Ridge Folk Festivals, and since then he's gone on to the main stage of those and other festivals and open for some big-name artists. What separates Anthony from almost all of his contemporaries is his songwriting maturity, with a turn of phrase and an ear for melody that clearly stands out. anthonydacosta.com



Uncle Calvin's Coffeehouse

"Fine Acoustic Music for 28 + Years"



Uncle Calvin's is located at:
Northpark Presbyterian Church
 9555 N. Central Expressway
 Dallas, TX 75231-5001
 Web page: www.unclecalvins.org
 Phone: 214-363-0044



Doors open at 7:30 PM, Shows begin at 8:00 PM

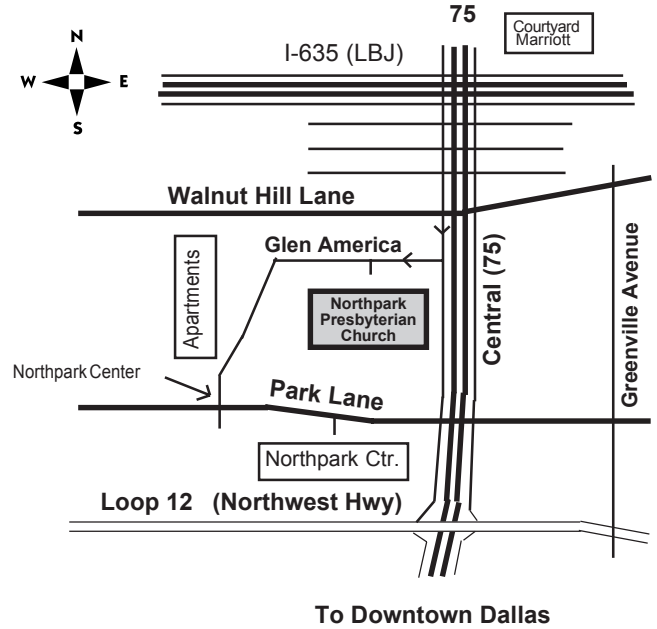
General admission - no table reservations - advance tickets available

Adult admission is \$12/\$15. That's \$12 in advance or \$15 at the door. Exceptions are as noted for some shows

Children and Teens are admitted for half adult price

Uncle Calvin's is a smoke and alcohol-free venue.
 Delicious coffees, teas, juices, snacks & desserts are available.

Take the Central Exp. service Rd. south from Walnut Hill Lane to Glen America, or take Northpark Exit 3 north from Park Lane



Calvin's Quick Calendar Spring 2010

| Date | Main Act | Opener/Notes |
|--------|---|--|
| Apr 09 | The Waymores | by the Kerrville Folk Festival on the Road |
| Apr 16 | Robin & Linda Williams (\$15/\$18) | John Wort Hannam |
| Apr 23 | Tim Grimm | Effron White |
| Apr 30 | Diana Jones | Nels Andrews |
| May 07 | Cliff Eberhardt | Bettman & Halpin |
| May 21 | Natalia Zukerman, Jason Wilber, Louise Taylor | |
| Jun 18 | Eliza Gilkyson | Sweet Talk Radio (\$15/\$18 no youth) |
| Jun 25 | Emily Elbert / Anthony da Costa | |

Artists to be featured this summer include

July 09Woody Guthrie Festival Preview (\$15/\$18)

with Jimmy LaFave, Audrey Auld, & more
jimmylafave.com audreyauld.com

Jul 16Closed for Woody Guthrie Festival woodyguthrie.com

Jul 23Denice Franke / Geoff Bartley

denicefranke.com geoffbartley.com

July 30Sara Hickman (\$15/\$18) sarahickman.com



CALVIN'S SEZ:



Do you have a couple of hours or so each month to help us? We are looking for a volunteer to help with our publicity efforts by posting our calendar on various web sites. If you are interested in getting out the word about us, your favorite venue, let us know. We're always happy to welcome your volunteering in any capacity, just look for our volunteer coordinator (Mark) at a show. In case you've not yet noticed, we've created a shopping cart on our web site unclecalvins.org to help you make multi-show ticket orders, and the fee has been reduced. Doing our part to help in the economic recovery.

Uncle Calvin's Coffeehouse

A non-profit volunteer organization sponsored by:

Northpark Presbyterian Church
 9555 N. Central Expressway
 Dallas, Texas 75231-5001

Schedule / Newsletter

Spring 2010